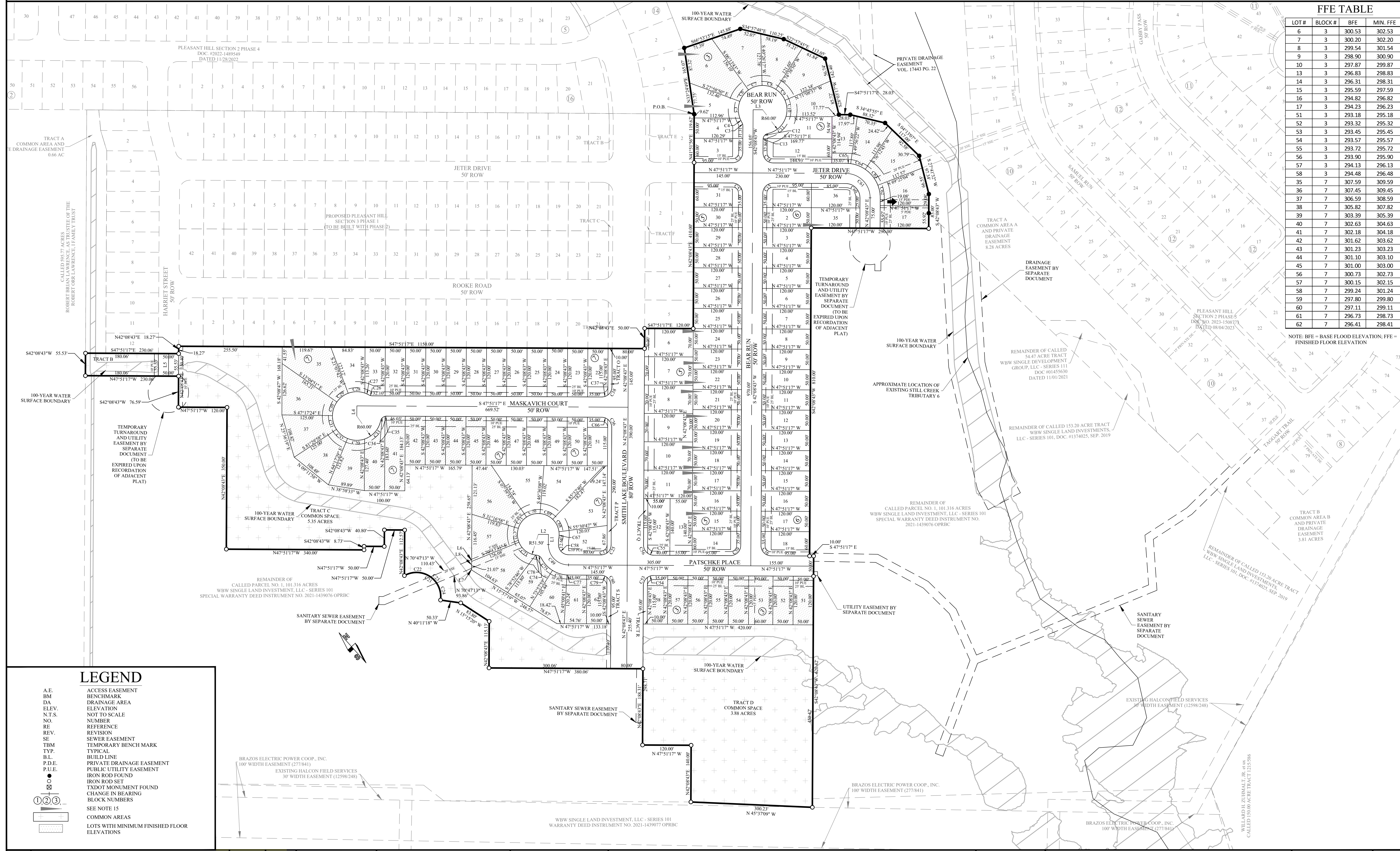


FFE TABLE

LOT #	BLOCK #	BFE	MIN. FFE
6	3	300.53	302.53
7	3	300.20	302.20
8	3	299.54	301.54
9	3	298.90	300.90
10	3	297.87	299.87
13	3	296.83	298.83
14	3	296.31	298.31
15	3	295.59	297.59
16	3	294.82	296.82
17	3	294.23	296.23
51	3	293.18	295.18
52	3	293.32	295.32
53	3	293.45	295.45
54	3	293.57	295.57
55	3	293.72	295.72
56	3	293.90	295.90
57	3	294.13	296.13
58	3	294.48	296.48
35	7	307.59	309.59
36	7	307.45	309.45
37	7	306.59	308.59
38	7	305.82	307.82
39	7	303.39	305.39
40	7	302.63	304.63
41	7	302.18	304.18
42	7	301.62	303.62
43	7	301.23	303.23
44	7	301.10	303.10
45	7	301.00	303.00
56	7	300.73	302.73
57	7	300.15	302.15
58	7	299.24	301.24
59	7	297.80	299.80
60	7	297.11	299.11
61	7	296.73	298.73
62	7	296.41	298.41

NOTE: BFE = BASE FLOOD ELEVATION; FFE = FINISHED FLOOR ELEVATION



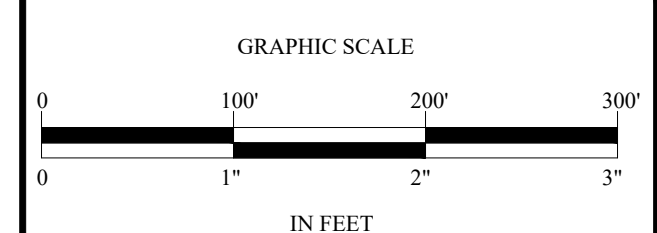
LEGEND

- A.E. ACCESS EASEMENT
- BM BENCHMARK
- DA DRAINAGE AREA
- ELEV. ELEVATION
- N.T.S. NOT TO SCALE
- NO. NUMBER
- RE REFERENCE
- REV. REVISION
- SE SEWER EASEMENT
- TBM TEMPORARY BENCH MARK
- TYP. TYPICAL
- B.L. BUILD LINE
- P.D.E. PRIVATE DRAINAGE EASEMENT
- P.U.E. PUBLIC UTILITY EASEMENT
- IRON ROD FOUND
- IRON ROD SET
- ⊕ TXDOT MONUMENT FOUND
- ① CHANGE IN BEARING
- ② BLOCK NUMBERS
- ③ SEE NOTE 15
- COMMON AREAS
- ▨ LOTS WITH MINIMUM FINISHED FLOOR ELEVATIONS

REV.	DESCRIPTION	DATE	BY	PROJECT INFORMATION	BENCHMARK
3	RESPONSE TO SECOND COB COMMENTS (FFE HATCH AND TABLE)	12/20/23	JCL	TOTAL SIZE: 32.96 AC. TOTAL BLOCKS: 4 TOTAL LOTS: 110 TOTAL TRACTS: 8	CONCRETE TXDOT MONUMENT (SOUTHEAST R.O.W. LINE OF SANDY POINT ROAD) NAD 83 (2011) TX CENTRAL ZONE #4203 N: 10232940.54 E: 3525284.48 ELEV. = 333.33'
2	RESPONSE TO FIRST COB COMMENTS	09/06/23	JCL		
1	ORIGINAL RELEASE	08/28/23	JCL		

PROJECT NUMBER: PH32
CLIENT NAME: WBW SINGLE DEVELOPMENT GROUP, LLC - SERIES 140
CLIENT LOCATION: GEORGETOWN, TX

APPROVED BY: KAC
AUTHORIZED BY: WBW



FINAL PLAT
PLEASANT HILL SECTION 3 - PHASE 2
CITY OF BRYAN, COUNTY OF BRAZOS, TEXAS

LEGAL DESCRIPTION
32.96 AC. ACRE TRACT SITUATED IN, AND BEING OUT OF, THE STEPHEN F. AUSTIN SURVEY, A-62, AND THE JAMES McMILLEN SURVEY, A-176, BRAZOS COUNTY, TEXAS

Valgo Engineering, LLC
109 W 2nd Street Ste. 201
Georgetown, TX 78626
PH (254) 953-5533
FX (254) 953-5057
Texas Registered Engineering Firm F-24040
Texas Registered Surveying Firm # 10194797

SHEET 2 OF 2

PRINTED ON December 20, 2023